


# Education

Olivia S. Tong, MS  
Epidemiologist, HSA

# Education

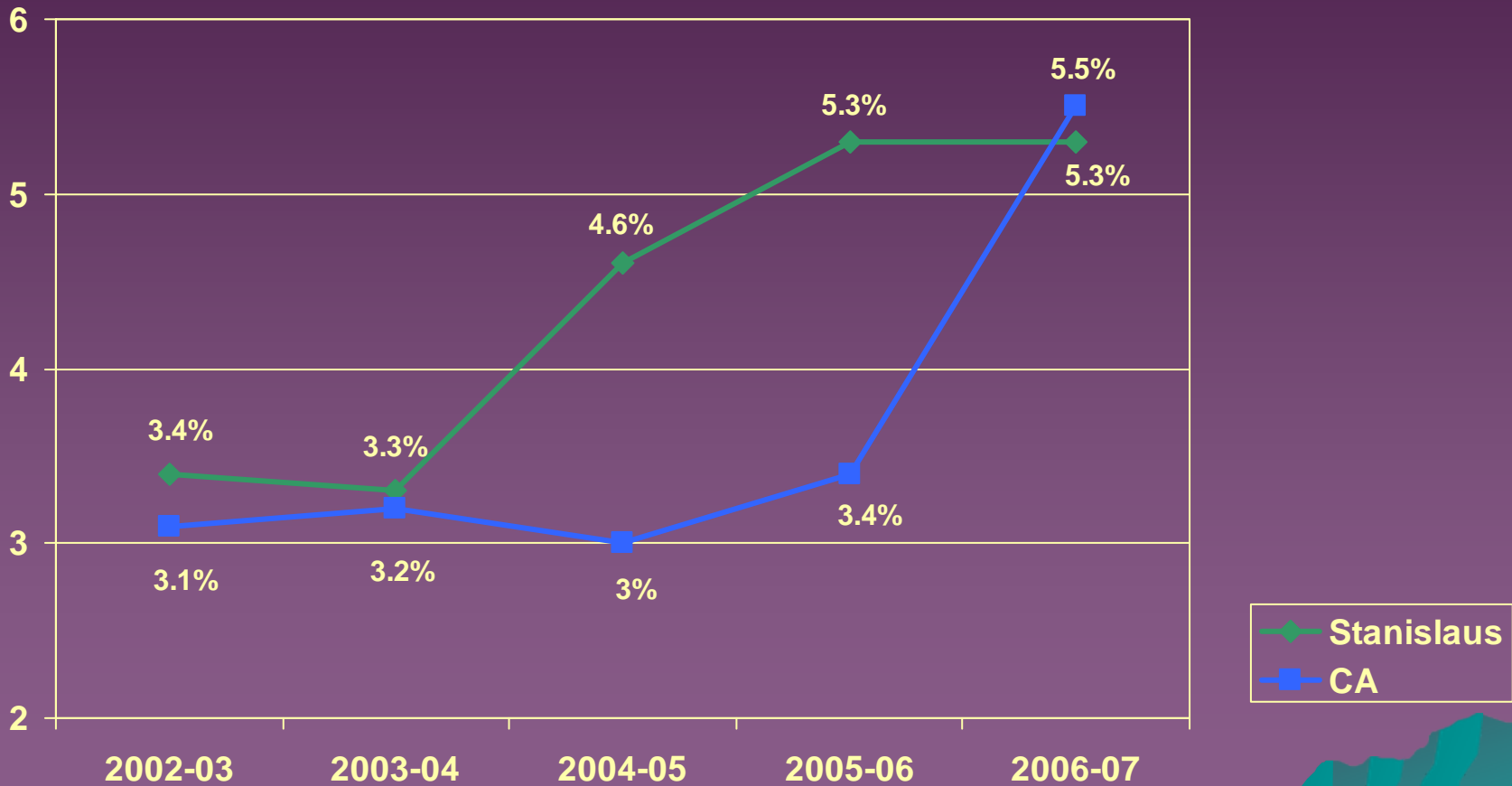
- ◆ Educational attainment is related to health status and life expectancy
  - ◆ Children whose parents have low levels of education tend to do poorly themselves
    - Which affects the type of employment, insurance coverage, chronic stress
  - ◆ Adequate social and cognitive development in childhood is important for success in educational attainment and adult literacy
- 

# Truancy

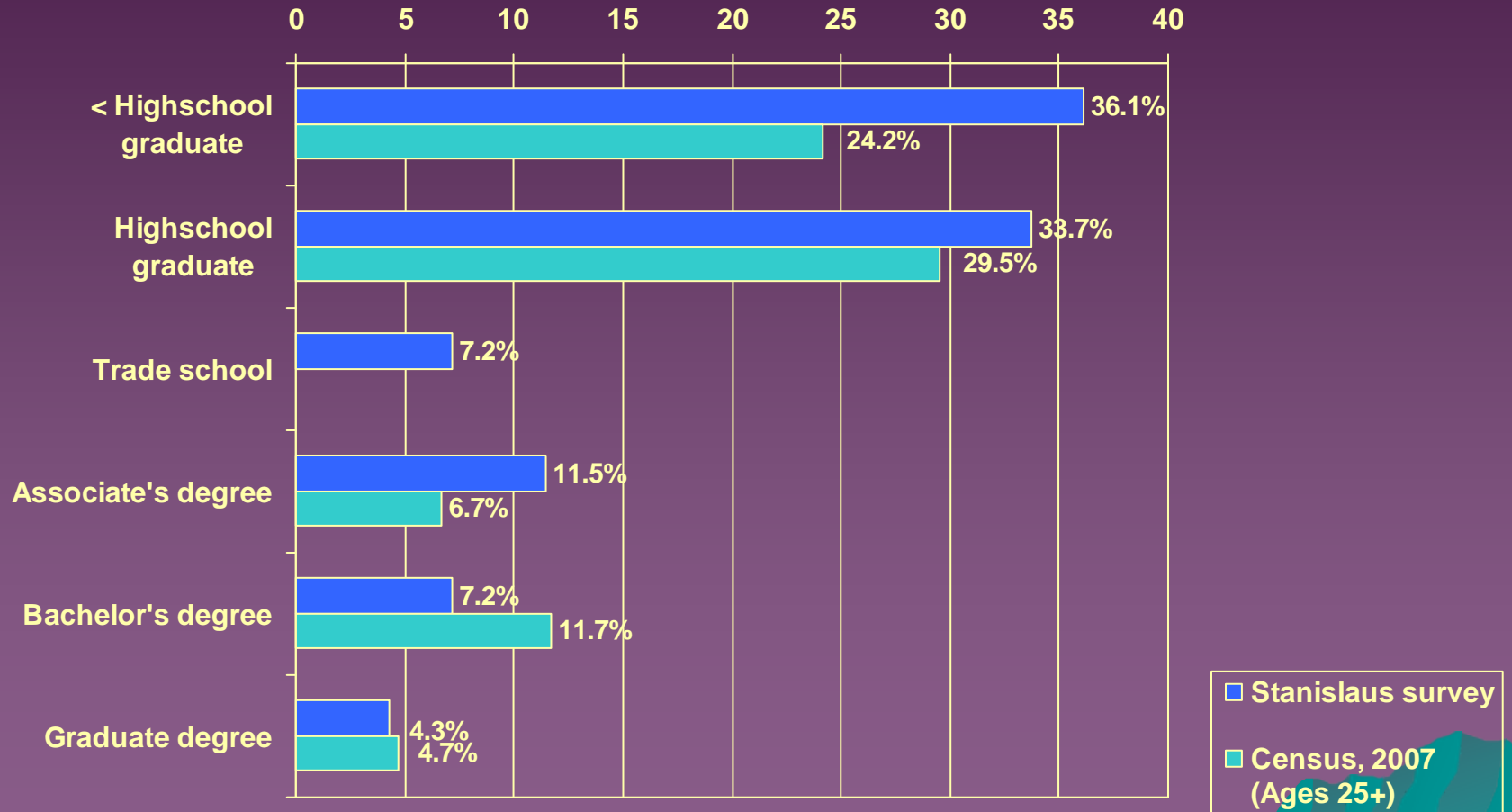


Source: 2008 Community Health Assessment

# Annual High School Dropout Rate per 100 Students

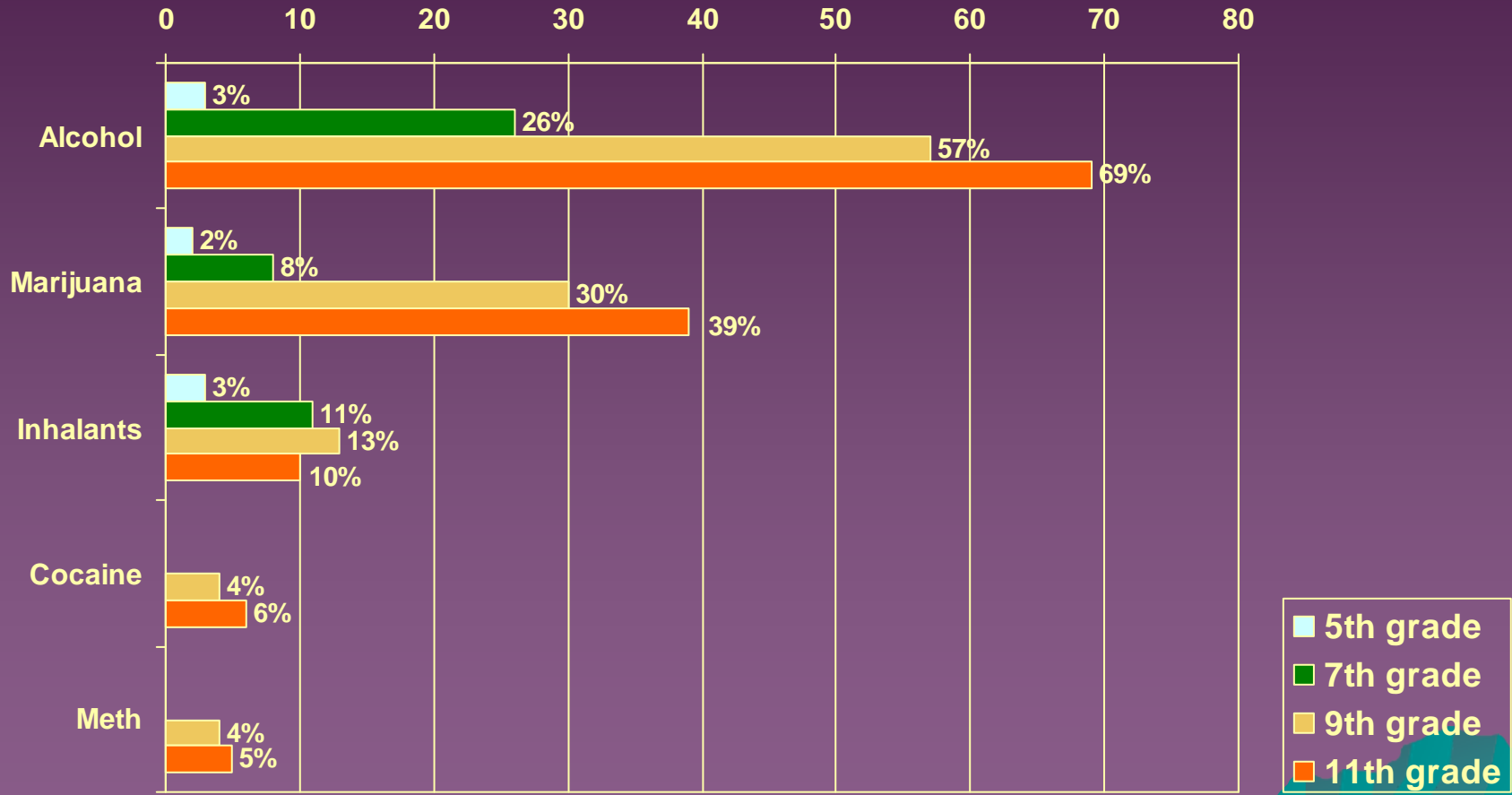


# Educational Attainment



Source: 2008 Community Health Assessment. N=2,707  
US Census Bureau, ACS, 2008. N=309,855

# % of Students Who Have Ever Used Alcohol or Drugs in Their Lifetime, 2004-2006, by Grade Level



# Delinquency

- 1. Vandalism
- 2. Shop lifting
- 3. Graffiti
- 4. Gang

**Barriers to Education**

- 1. Truancy
- 2. Poor teacher Student relationship
- 3. Poor family relationship
- 4. Lack of family history of education

Drop out

Academic Achievement

Employment Potential

College enrollment

Earning Potential

Inadequate Health Insurance

**Poor Health Management And Health Outcomes**

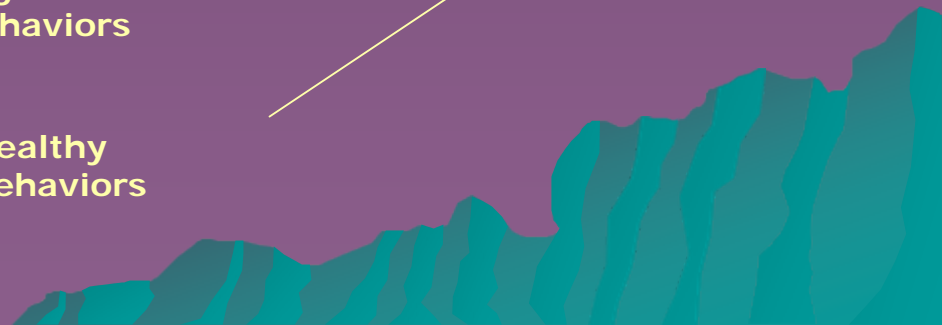
Fall back behind peers

Self esteem

Health Literacy

High risk Behaviors

Healthy Behaviors



# Teen Births

## % of All Live Births to Teen Mothers Ages 15-19 Years

